

# HATAY EARTHQUAKE

MISSION 2024-06-01



## **MISSION OBJECTIVES**

The devastating 8.9 earthquake that struck the HATAY REGION on Monday has resulted in a humanitarian crisis that rivals anything in the last 100 years.

Today's mission is to airdrop supplies to the beleaguered city of HATAY.

## **WEATHER AND NOTAMS**

A weakening low-pressure area remains over the AOR, resulting in low clouds and reduced visibilities for the next 12 hours.

Visibilities will be 10+ SM in haze and smoke.

Expect light-moderate turbulence below 6000 feet.

METAR LTAG 060202Z 23011KT 10+SM BKN053 15/6 A2992

METAR LTDA 060202Z 23011KT 10+SM BKN053 15/6 A2992

TAF LTAG 060300Z 27010KT P6SM BKN040

RMK NXT FCST BY 060206Z=

## **INTELLIGENCE UPDATE – SYRIA**

**Northern Syria has been affected by this terrible quake, and social order in the traditionally ALAWITE areas is collapsing, along with military cohesion.**

**Intelligence warns the risks of a collapse of the ASSAD regime may be imminent.**

**Syrian ARMY and AIR FORCES seem to be on a regular state of alert, but this may change at a moment's notice.**

**DO NOT FLY NEAR THE SYRIAN BORDER IF AT ALL POSSIBLE.**

## **RULES OF ENGAGEMENT**

- 1. WEAPONS HOLD**
- 2. DO NOT ENGAGE UNLESS A HOSTILE ACT IS COMMITTED AGAINST NATO OR COALITION FORCES.**

## **MISSION PLANNING**

**MISSION NUMBER – ASC1001**

**OBJECTIVE: Drop medical aid in the city of HATAY.**

**FLOW:**

**!! LOAD 7 CDS CRATES PRIOR TO ENGINE START !!**

**Depart INCIRLIK 0530 local and proceed to OPSOP. Make contact with USAF Combat Controller Callsign BADGER to coordinate the airdrop.**

**Approaching OPSOP, be away of high terrain just to the west.**

**Badger would like one pass of each aircraft in trail with an egress to the south.**

**Recommended airdrop altitude is 800ft MSL.**

**Key Points:**

- **One pass from each aircraft in trail.**
- **Beware high terrain west of OPSOP**
- **Do not cross the SYRIAN border.**
- **Safety: Maintain situational awareness and be prepared to react to threats.**

**STEP – 0130z / 0430 LOCAL**

**START – 0220z / 0520 LOCAL**

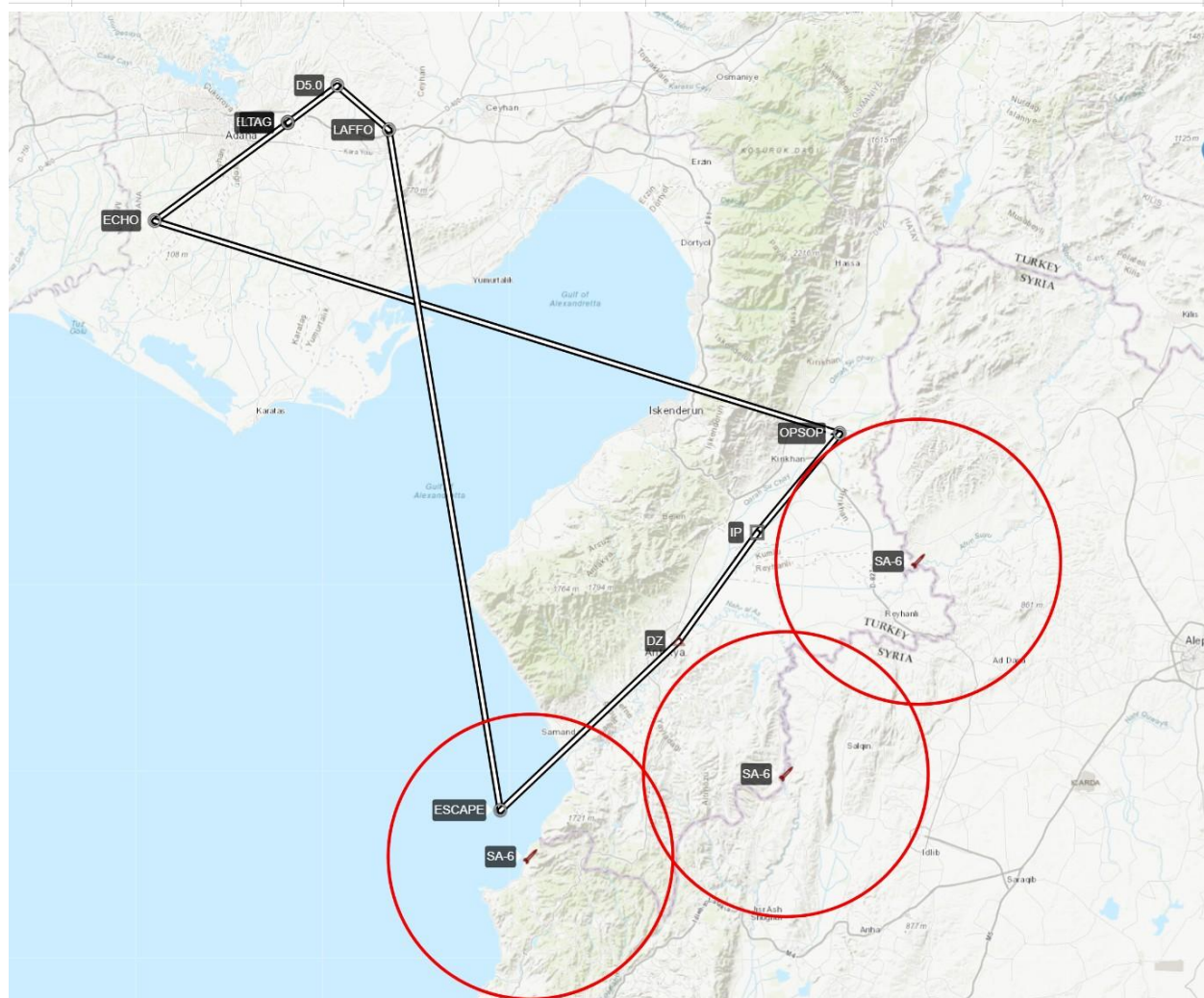
**TAXI – 0330z / 0530 LOCAL**

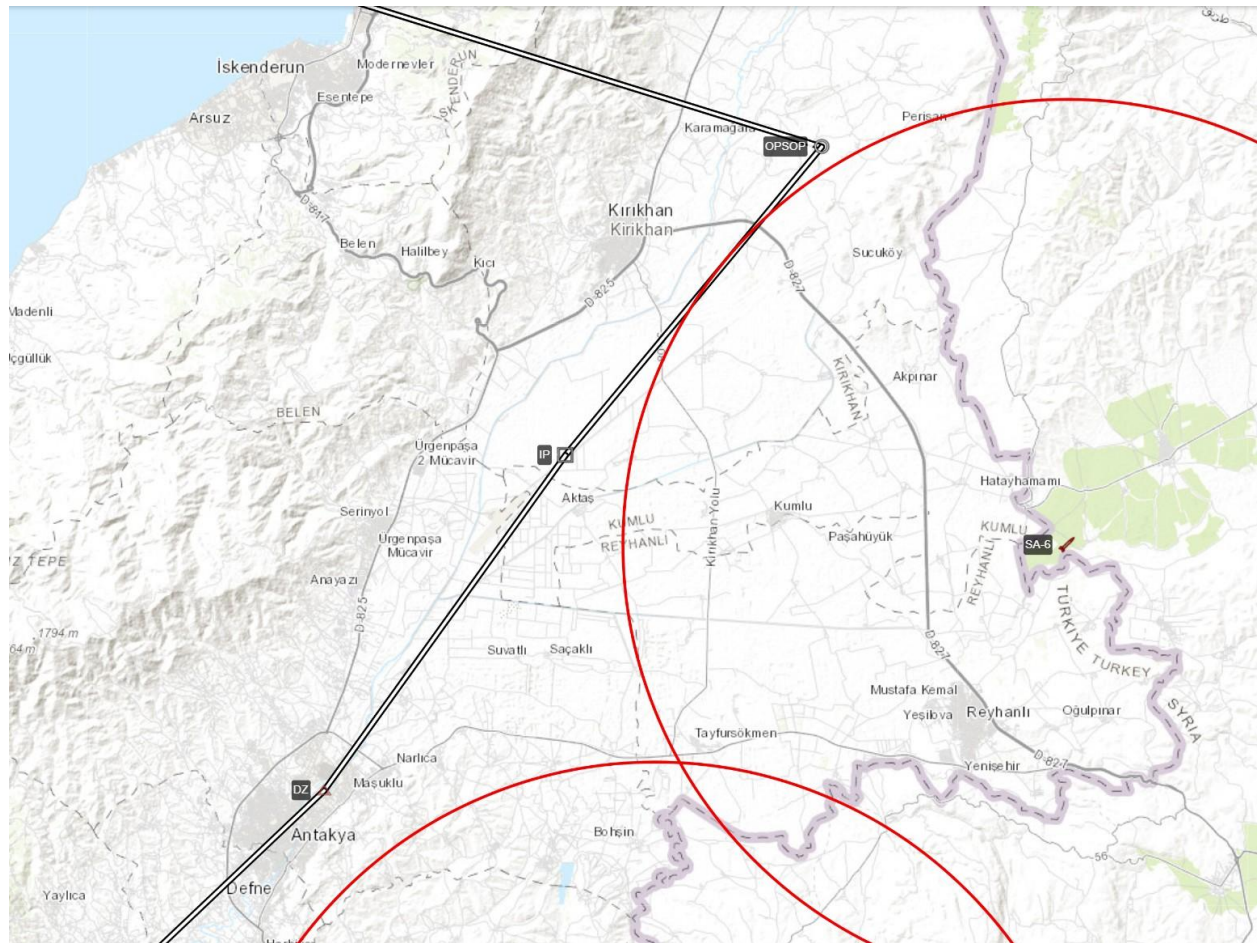
**TARGET – 0351z / 05:51 LOCAL**

**EXPECTED MISSION LENGTH: 55 MINUTES.**

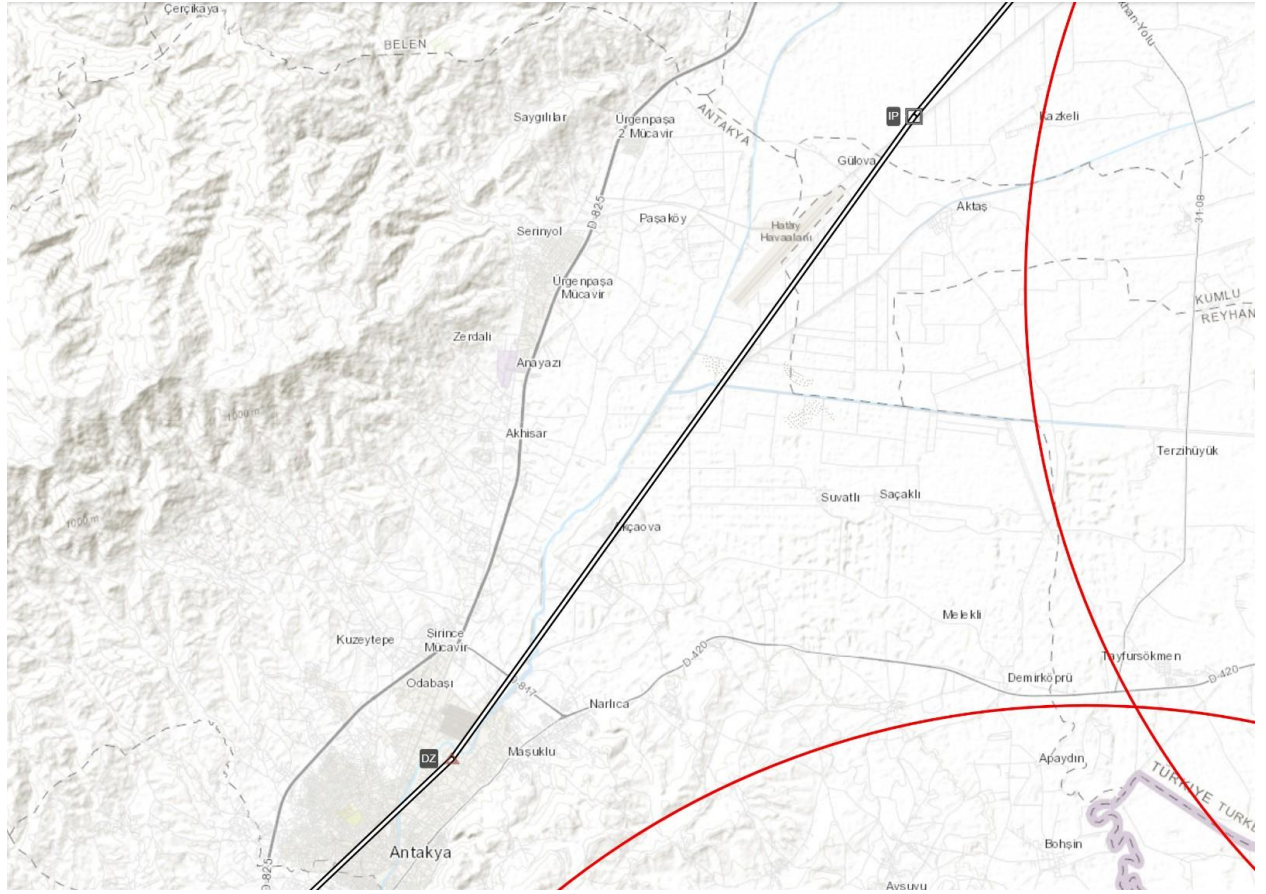
## HATAY EARTHQUAKE RELIEF

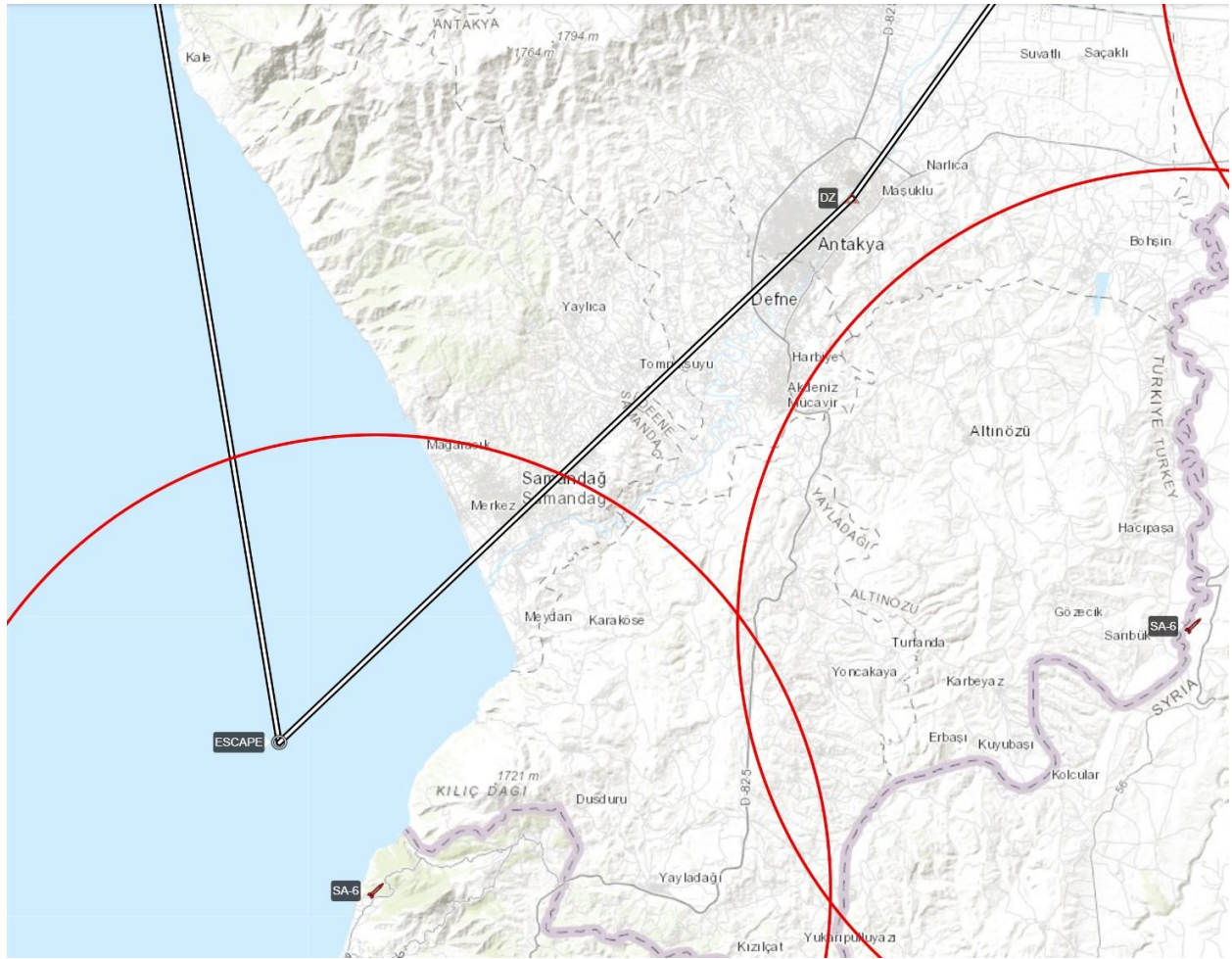
WP	FROM/TO	ALT	MAG HDG	DIST	G/S	TIME ENROUTE	ETA	EST.ETA
0							/	
1	LTAG							
2	ECHO	5000	230	15	151	05:58	5:30:00	
3	OPSOP	11000	103	65	300	13:00	5:43:00	
4	IP	1500	216	12	300	02:24	5:45:24	
5	DZ	800	212	12	130	05:32	5:50:56	
6	ESCAPE	800	223	23	250	05:31	5:56:28	
7	LAFFO	8000	347	63	300	12:36	6:09:04	
8	D5.0	2000	307	6.1	200	01:50	6:10:53	
9	LTAG	0	230	6.5	140	02:47	6:13:40	















**WAYPONT 1**

**WAYPOINT 2 (IP)**

## **MISSION DESIGNER NOTES**

**This mission can be played single player or multicrew. There are 4 flyable C-130s and they can each be operated multicrew.**

**IF YOU ARE PLAYING SINGLE PLAYER, ENSURE YOU CHOOSE TO FLY "CARGO 61 (CO61). MISSION TRIGGERS ARE BASED ON THIS UNIT.**

**This mission is a little different than my other missions. Radio calls will happen automatically without the player needing to change frequencies.**

**ENSURE THAT YOU LOAD CDS CRATES PRIOR TO ENGINE START (LEFT SHIFT + C TO GET TO THAT MENU)**

**Do fly your flight plan unless you are cleared to deviate from it, or operational reasons cause you to change things up.**

**Mission triggers are based on units being at certain locations (for the most part), so try and fly your flight plan if you can.**